



GAT MONTHLY MEMBERSHIP PROGRESS REPORT

Results as of: 3/31/2024

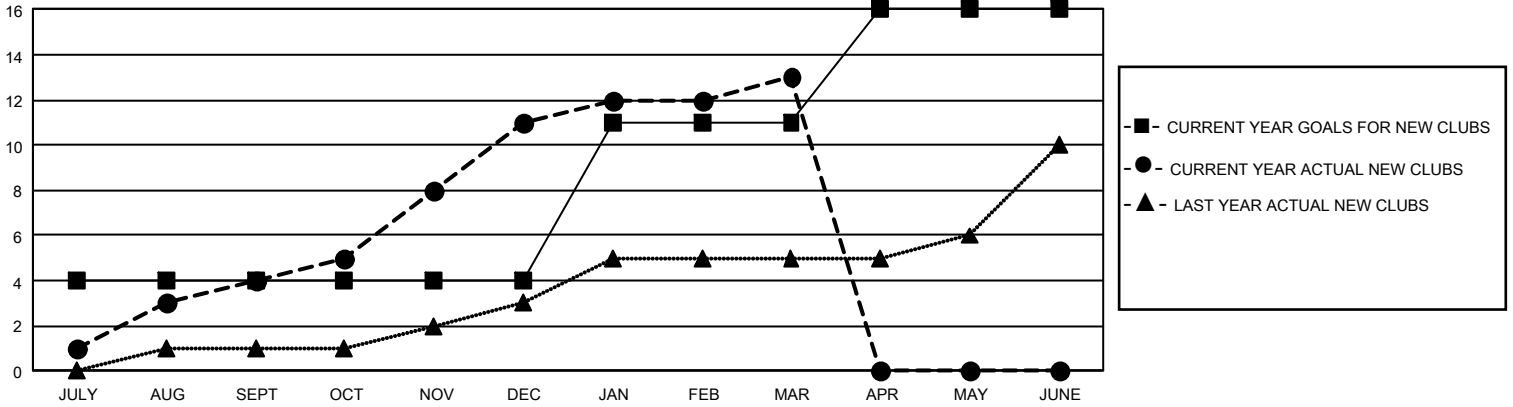
GMT Constitutional Area 8, Group D

REPORT DOES NOT INCLUDE CLUBS IN UNDISTRICTED AREAS.

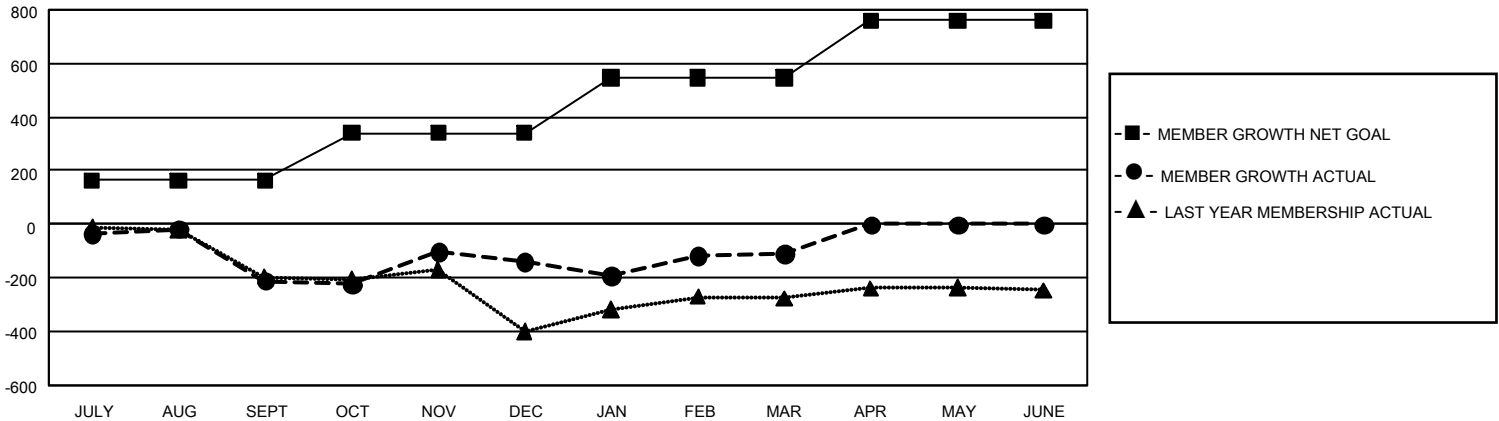
Clubs			
RESULTS FOR 2023-2024			
QUARTER	NEW CLUB GOAL	NEW CLUBS	DROPPED CLUBS
JULY/AUG/SEPT	12	4	2
OCT/NOV/DEC	0	7	5
JAN/FEB/MAR	21	2	5
APR/MAY/JUNE	15	0	0

Members			
RESULTS FOR 2023-2024			
QUARTER	MEMBER GROWTH NET GOAL	MEMBER GROWTH ACTUAL	DROPPED MEMBERS ACTUAL (including transfers)
JULY/AUG/SEPT	163	271	473
OCT/NOV/DEC	178	593	477
JAN/FEB/MAR	206	473	334
APR/MAY/JUNE	214	0	0

GOALS AND ACTUAL NEW CLUBS CUMULATIVE



GOALS AND ACTUAL MEMBERS CUMULATIVE



DROPPED CLUBS: 12	114 CLUBS OF 194 ADDED 1 OR MORE NEW MEMBERS	GENDER DISTRIBUTION	
		MALE 1,537 (38.57%) FEMALE 2,447 (61.41%) NON BINARY 1 (0.03%) PREFER NOT TO ANSWER 0 (0.00%)	
DROPPED MEMBERS		CLICK HERE FOR CUMULATIVE MEMBERSHIP DATA	TOTAL FAMILY UNIT MEMBERS 517
DECEASED 17 CLUB CANCELLED 191 OTHER 1,076 TOTAL 1,284	FAMILY MEMBERS PAYING HALF DUES 301		